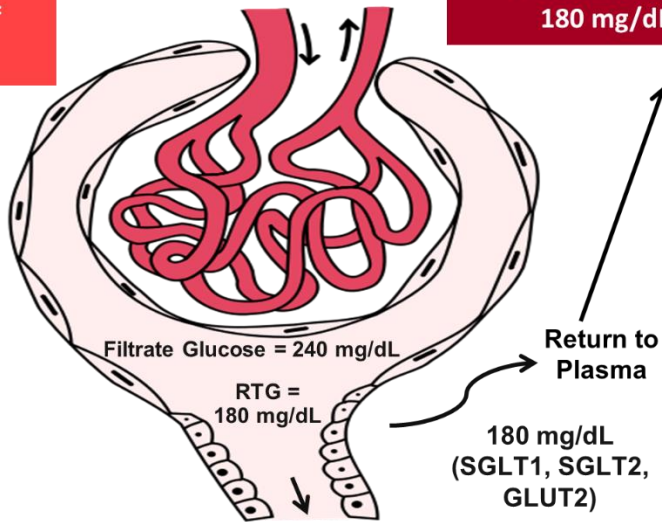


Hyperglycemia: Normal RTG vs. T2DM

Adapted from Cardiac benefits in Diabetes Therapy: Comparing SGLT2 Inhibitors and GLP-1 Agonists
 By Samuel Grossman, BS Pharm, PharmD, CDE, FADE

Hyperglycemia: Normal RTG

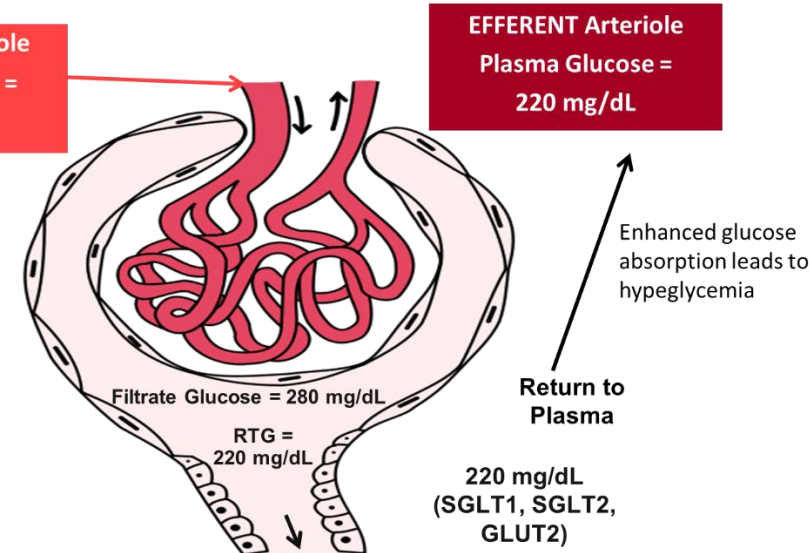
AFFERENT Arteriole
 Plasma Glucose =
 240 mg/dL



Urinary glucose excretion = 60 mg/dL

Hyperglycemia: T2DM

AFFERENT Arteriole
 Plasma Glucose =
 280 mg/dL



Urinary glucose excretion = 60 mg/dL