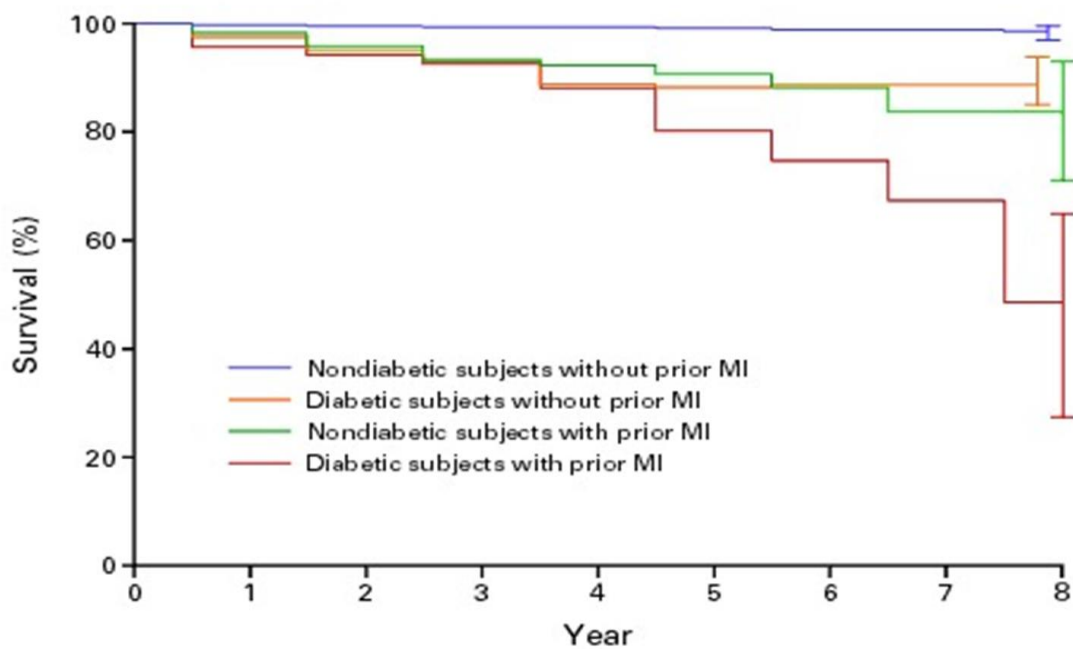


Relationship of Diabetes and Heart Disease

Adapted from Cardiac benefits in Diabetes therapy: comparing SGLT2 inhibitors and GLP-1 Agonists

By Samuel Grossman, BS Pharm, PharmD, CDE, FADE



Kaplan–Meier Estimates of the Probability of Death from Coronary Heart Disease in 1059 Subjects with Type 2 Diabetes and 1378 Nondiabetic Subjects with and without Prior Myocardial Infarction.

Reference(s):

- <https://www.nejm.org/doi/full/10.1056/nejm1998072333390404> accessed 9/19